



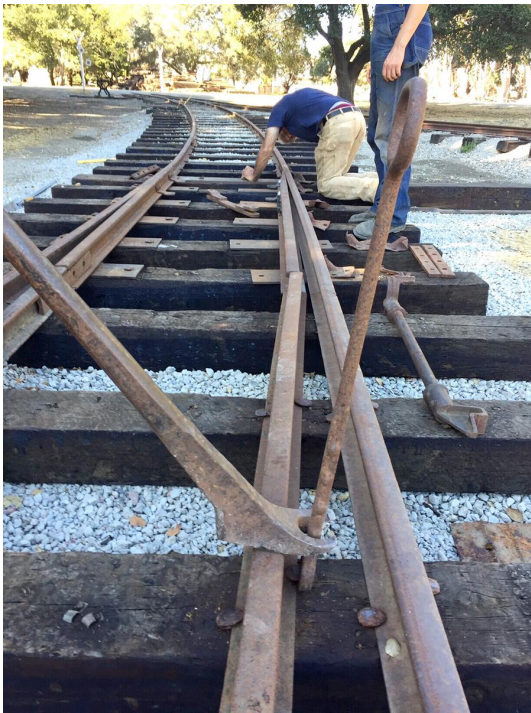
## Volunteer Information

SPCRR is a nonprofit organization led by volunteers. We rely on volunteers to achieve our mission to preserve and restore local historic railroad cars, as well bring local railroad history alive for people visiting Ardenwood Historic Farm. Without our volunteers, SPCRR would not exist. THANK YOU for considering becoming a SPCRR volunteer!

## Volunteer Opportunities

- ❖ Restoration\*
- ❖ Track Crew\*
- ❖ Interpretation
- ❖ Rail Fair
- ❖ Haunted Railroad

*\*Volunteers must be 18 years or older.*



## Work Days

Mondays - railroad car restoration

Sundays - track laying and maintenance

Hours: 10am - 4pm

*\*We often have additional Saturday work days if people are available.*

## What to wear and bring to Work Days

- Closed toe shoes/boots (steel toe if you have them)
- Long pants
- Work gloves
- Hat, long-sleeved shirt, sunscreen for outdoor work
- Lunch
- Water

## Contact Info

Please contact us before a work day to get directions and so we know who to expect.

Ken Underhill

[kcunderhill@yahoo.com](mailto:kcunderhill@yahoo.com)

(925) 373-6884

# HOW TO GET TO THE MUSEUM CARBARN

## FROM WESTBAY/DUMBARTON BRIDGE/CA-84

- Take exit 36 for Thornton Avenue toward Paseo Padre Pkwy (0.3 mi)
- Turn left onto Thornton Ave (0.2 mi)
- Continue onto Paseo Padre Pkwy (2.5 mi)
- Turn right onto Siward Dr and drive to the gate at end of Siward Dr.
- Open gate, cross tracks, and close gate.
- Take a slight left to follow the gravel fire road to the Carbarn.
- Park on left side of carbarn.

## FROM OAKLAND/NORTHBAY/I 880

- Head southeast on I-880 S
- Take exit 22 for Alvarado Blvd toward Fremont Blvd N (0.2 mi)
- Use the left 2 lanes to turn left onto Alvarado Blvd (174 ft)
- Keep left to stay on Alvarado Blvd (0.2 mi)
- Continue onto Fremont Blvd (0.4 mi)
- Turn right onto Paseo Padre Pkwy (0.5 mi)
- Turn left onto Siward Dr and drive to the gate at end of Siward Dr.
- Open gate, cross tracks, and close gate.
- Take a slight left to follow the gravel fire road to the Carbarn.
- Park on left side of carbarn.

## FROM SAN JOSE/SOUTHBAY/I 880

- Head northwest on I-880 N
- Use the right lane to take exit 22 for Fremont Blvd N (0.2 mi)
- Merge onto Fremont Blvd (0.4 mi)
- Turn right onto Paseo Padre Pkwy (0.5 mi)
- Turn left onto Siward Dr and drive to the gate at end of Siward Dr.
- Open gate, cross tracks, and close gate.
- Take a slight left to follow the gravel fire road to the Carbarn.
- Park on left side of carbarn.

## GOOGLE MAPS/APPLE MAPS/GPS

- Set the destination address on your phone or GPS to “34798 Siward Dr, Fremont, CA”. This is the Siward Gate location.
- Follow GPS’s instructions to Siward Gate.
- Open gate, cross tracks, and close gate.
- Take a slight left to follow the gravel fire road to the Carbarn.
- Park on left side of carbarn.